

A photograph of a paved path in a park during autumn. The path is covered with fallen yellow and orange leaves. Tall trees with yellowing foliage line both sides of the path, and a bright light source creates a soft glow on the left side of the image.

# Welcome to SCB!

Wednesday, February 3<sup>rd</sup>, 2016



# Today's Meeting Outline

- **Creature Feature**
- **Issue of the Week**
- **Committee Updates**
- **Membership Fee Collection**
- **T-Shirt Sales**
- **Committee Meetings**
- **External Initiatives**



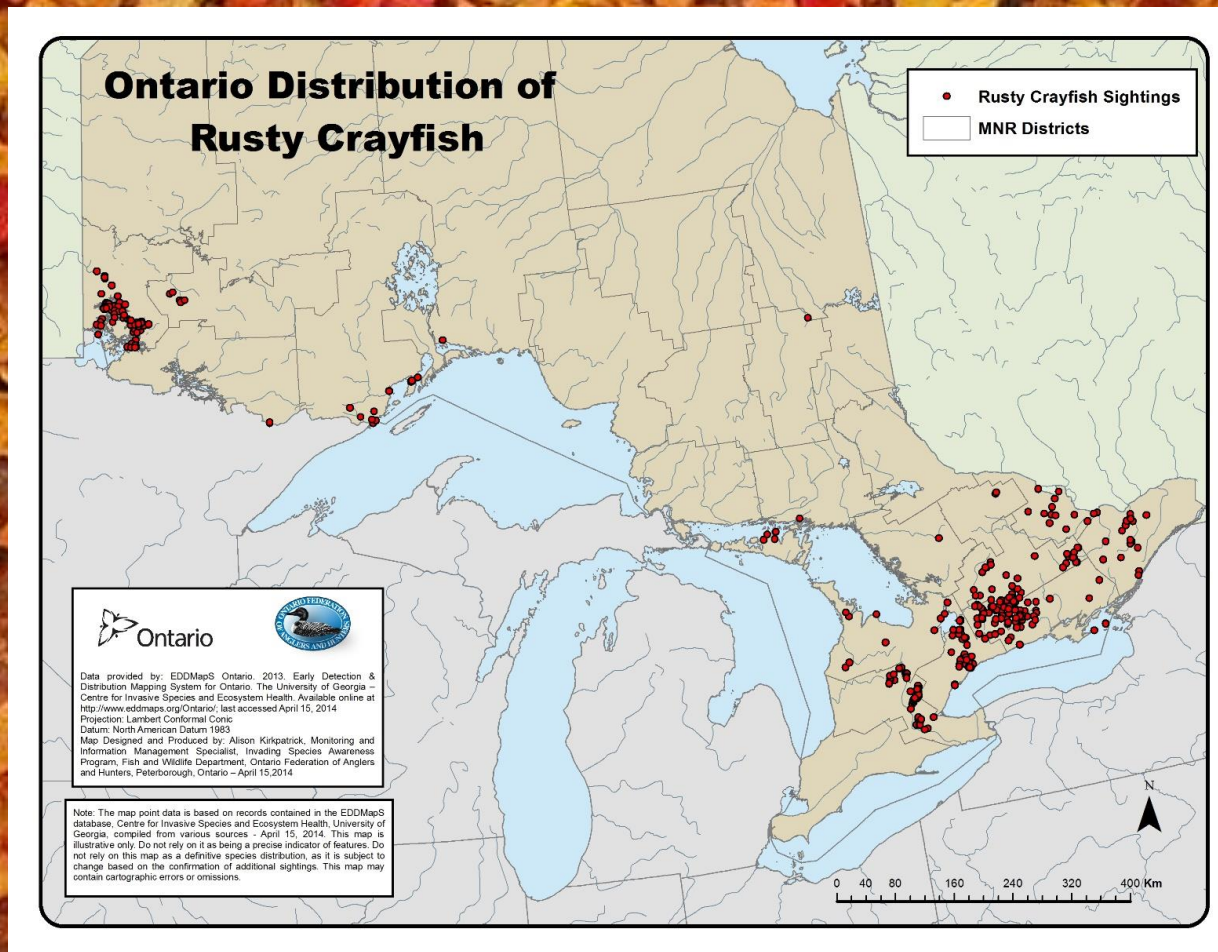
# Creature Feature

- Rusty Crayfish – *Orconectes rusitcus*
- Native to the Ohio River Basin in USA
- First found in the Kawartha Lakes region in the 1960s
- Introduced by anglers, but other possible vectors include the pet trade or scientific supply trade
- Found in lakes, rivers/streams, ponds, etc. with adequate cover
- Adults are large (7.5-13cm rostrum to tail)





# Distribution





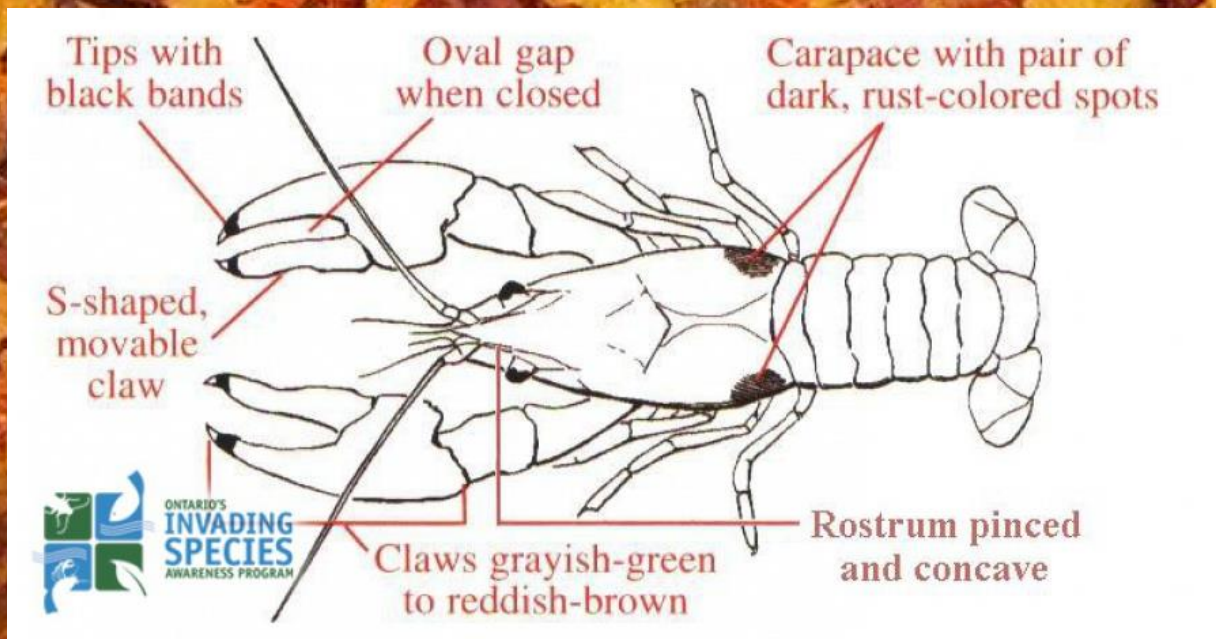
# Creature Feature

- **Impacts**
  - Compete with natives for food, causing a decline or disappearance of natives
  - Better able to avoid predators, increasing the likelihood of native decline
  - Reduce spawning and nursery areas for native fish due to removal of macrophytes
  - Females carry their eggs with them instead of depositing them, increasing recruitment rates
- **Very aggressive and eat large amounts of macrophytes**
- **Once established in an area, there's no practical way to remove them**



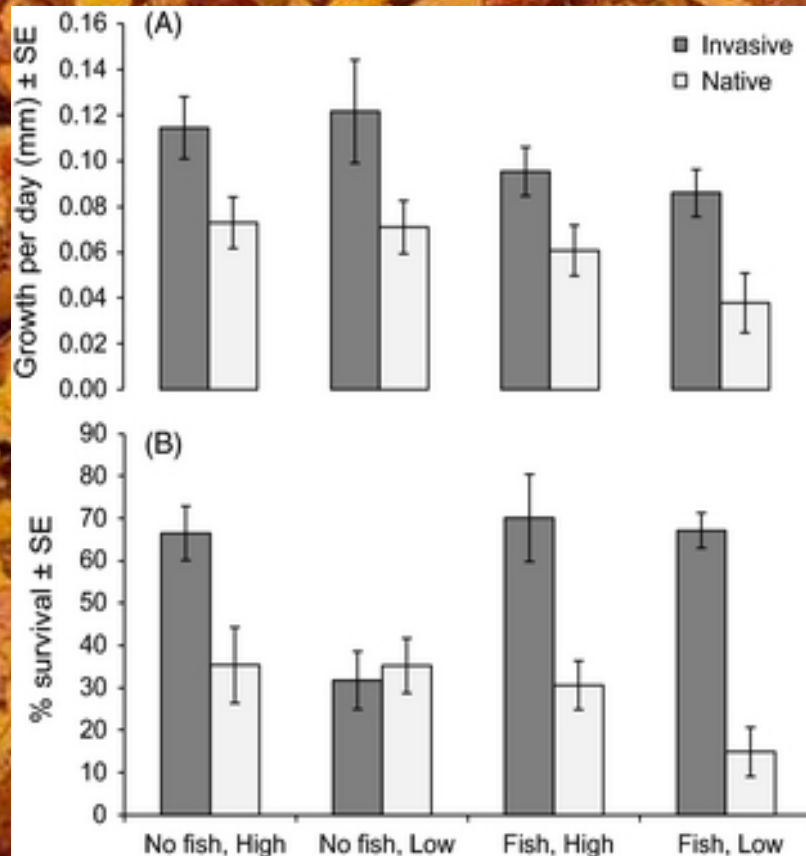
# What you can do

- Identify the species to prevent accidental spread
- Use these crayfish as bait only where they were caught
- Contact the Invading Species Hotline if you





# Evolution of invasive traits in nonindigenous species: increased survival and faster growth in invasive populations of rusty crayfish (*Orconectes rusticus*)



- Invasives had greater growth rates than natives; consistent with the evolution of faster growth rates in other species
  - May be due to maternal effects (different hormones or specific egg nutrients), temperature, or food availability
- Predatory fish presence was a strong predictor of growth rate
- Higher growth rate allows females to produce more eggs at a younger age; recruitment may be influenced by density-dependent and density-independent factors
- Article: <http://onlinelibrary.wiley.com/doi/10.1111/eva.12198/full>



# Great Bear Rainforest agreement creates 'a gift to the world'

An area bigger than Vancouver Island is now under complete protection from industrial logging

By Fiona Morrow, CBC News | Posted: Feb 01, 2016 8:04 AM PT | Last Updated: Feb 02, 2016 11:50 AM PT



Dallas Smith of the Nanwakolas Tribal Council presents B.C. Premier Christy Clark with a gift at the announcement of the Great Bear Rainforest agreement. (Kamil Karamali/CBC)

## Stay Connected with CBC News



Mobile



Facebook



Podcasts



Twitter



Alerts



Newsletter

## Latest British Columbia News



■ Woman-hating blogger Roosh V not welcome in Vancouver, says Gregor Robertson [0](#)

■ SkyTrain slowed during afternoon rush due to medical emergency [0](#)

■ 29 animals rescued in Winlaw following B.C. SPCA investigation [0](#)

■ Fly with the eagle from Vancouver's Burrard Street bridge





The Spirit Bear (Kermode Bear)

In the Great Bear Rainforest



# Great Bear Rainforest

- Largest remaining tracts of unspoiled temperate rainforest
- 1000 year old Western Red Cedar; 90 m Sitka spruce

In 2009, BC made 1/3 off limits to logging; rest under ecosystem management





# *Ursus americanus kermodei*

- White variant of the North American black bear
- Advantage to fishing during the day
- First Nations never hunted

“Raven made one in every ten black bears white to remind the people of a time when glaciers covered this land”

-Tsimshian Lore





- Population size 400-1000
- Found exclusively in the GBR
- Salmon is primary fat and protein source





# The Kitasoo Spirit Bear Conservancy

- 103 000 hectares of protected habitat (between Vancouver and Prince Rupert)
- Vast expanses of intact rainforest, remote inlets, rugged coast, rivers rich in salmon





# Committee Updates

- Do we have any updates from...
  - Advertising/Social?
    - Saturday social update
    - Next event?
  - Education
    - Science Rendezvous worksheet update
    - Schoolyard Naturalization update
  - Photo Contest
    - Canvassing update
    - Next steps?
  - Sustainability/Issues
    - Bake sale update
    - “This Changes Everything”
    - Go Veg campaign doodle





# Membership Fee Collection

- We will be passing around a cash box and member list
- If you wish to be an official member of SCB, place \$5 in the box and sign your name
- If you aren't able to give \$5, just sign your name





# T-Shirts!

- We will be selling SCB t-shirts for \$12
- They come in S, M, L, and XL





# External Initiatives

- EEB Seminar: “Causes and consequences of variation in malaria infections” on February 4<sup>th</sup> (Tomorrow!)
  - <https://eebseminar.wordpress.com/>
- Conservation Queen’s Valentines Day Bake Sale on February 8<sup>th</sup>-10<sup>th</sup>
  - <https://www.facebook.com/events/1558907304422858/>
- Pop-Up Thrift Shop on February 5th
  - <https://www.facebook.com/events/2166633338676951/>